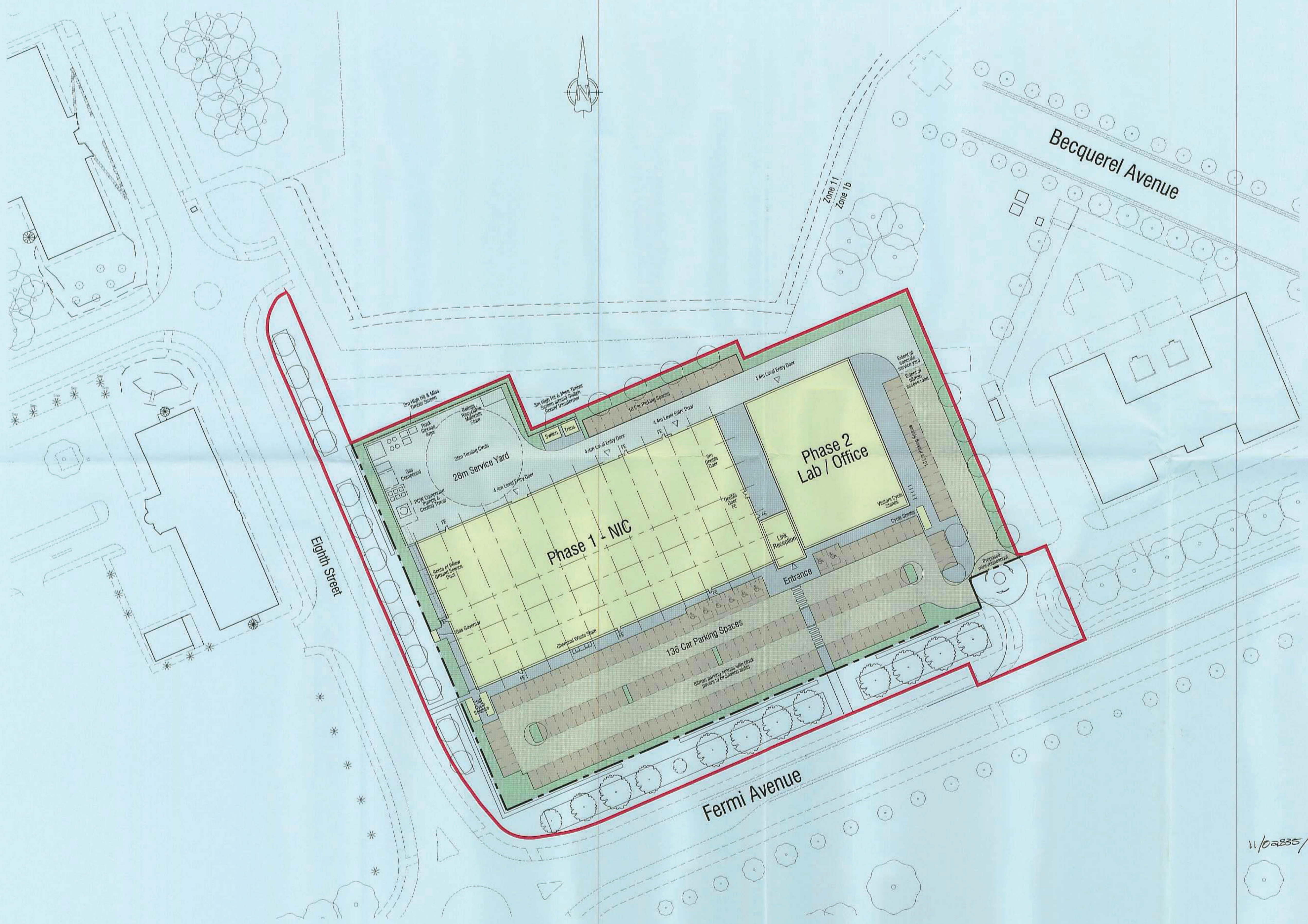


notes
 This drawing and design is the copyright of aja architects ltd and must not be reproduced in part or in whole without prior written consent. Contractors must verify all dimensions on site before commencing work or preparing shop drawings. If in doubt ASK.



Schedule of Accommodation	
All areas are approximate	
Phase 1 - NIC	
Gross Internal Area	
Ground Floor	3,300 sq.m. (35,521 sq.ft.)
First Floor	1,650 sq.m. (17,761 sq.ft.)
Total	4,950 sq.m. (53,282 sq.ft.)
Gross External Area	
Ground Floor	3,440 sq.m. (37,028 sq.ft.)
First Floor	1,725 sq.m. (18,568 sq.ft.)
Total	5,165 sq.m. (55,596 sq.ft.)
Parking	125 no. cars 20 no. cycles (Staff - covered) 3 no. cycles (Visitors - Sheffield hoops)
Phase 2 - Lab / Offices Two Store	
Gross Internal area	
Ground Floor	1,150 sq.m. (12,378 sq.ft.)
First Floor	1,150 sq.m. (12,378 sq.ft.)
Total	2,300 sq.m. (24,756 sq.ft.)
Single Storey Reception Building	85sq.m. (915 sq.ft)
Parking	45 no. cars 10 no. cycles (Staff - covered) 2 no. cycles (Visitors - Sheffield hoops)
Demise Site Area	1.30 ha. (3.27 acres)
Red Line Site Area	1.67 ha. (4.12 acres)

no.	date	revision	by



aja architects ltd
 1170 Elliott Court
 Herald Avenue
 Coventry Business Park
 COVENTRY CV5 6UB
 E: aja@aja-architects.com
 W: www.aja-architects.com

T: 024 7625 3200
 F: 024 7625 3210

aja architects ltd is a limited liability partnership registered in England No. OC336221



project
**Proposed R&D
 Process Building Plot 9
 Harwell Science Park**

drawing
**Proposed Site Layout
 Completed Development**

W/02335/FUL

scale	1:500	drawn	KT
checked	date	02/12/11	

no
**5192 - 066
 PLANNING**